

2020

IIDA Student Design Competition Project Showcase

A guide to inform and inspire
student design projects
and participation in future
IIDA competitions.



IIDA

Sponsored by



carolina
an OFS company

The IIDA Student Design Competition celebrates the talent and fresh design ideas of interior design students throughout the world who are currently enrolled in an interior design program or institution by providing them the opportunity to showcase their work and gain exposure in the interior design industry.



design problem

This 2020 design problem invited participants to space plan and design a digestive health clinic for a physicians group specializing in gastroenterology in Scottsdale, Arizona. Our jurors closely reviewed and scored the student projects submitted from across the globe and convened virtually to discuss and select the winners. Projects were judged on:

- Innovation and creativity
- Coherence and functionality
- Human and environmental impact
- Presentation
- Fulfillment of the project requirements and if applicable, any work above and beyond said requirements

Pictured: Connect - Nature: Supportive design for Digestive Clinic by Krishnee Rimaldy

our goal

In the pages that follow, you'll find comments and ideas taken directly from the esteemed jurors who reviewed this year's competition submissions, as well as the student written project descriptions. In addition to the three winning projects, four other submissions are here for your review.

Our goal is for students to take this information and push the boundaries of design. Be daring enough to capture your audience's attention and imagination, while demonstrating your thoughtfulness, intentionality and discipline. The IIDA Student Design Competition is an opportunity to not "play it safe," but rather aim for the aspirational. We wish you the best of luck in your future endeavors.

Pictured: Osmosis Digestive Health Clinic by Tak Ying Chan and Wanlu Liu



2020 jurors



Edwin A. Beltran, FIIDA, Assoc. AIA
Design Principal
NBBJ



Amy Mays, IIDA
Interior Design Practice Leader
HDR



Natalie Thomas
National Accounts Director, Healthcare
OFS and Carolina

FIRST PLACE

PROJECT

Osmosis Digestive Health Clinic

STUDENTS

Tak Ying Chan and Wanlu Liu

SCHOOL

Pratt Institute, New York

PROJECT DESCRIPTION

Osmosis clinic uses flexible design to incorporate futuristic technology focusing on value-based treatment and inclusivity for all patients.

It establishes a space to discuss and absorb new ideas, providing both mental and physical support for patients and their families. The clinic uses soft lines and curves to construct spaces for connectivity, guiding patients towards rehabilitation, and honoring the relationship between physicians and patients.



OSMOSIS DIGESTIVE HEALTH CLINIC

Osmosis is an innovative clinic that utilizes flexible design to incorporate futuristic technology aiding in medical care, focusing on value-base care, and inclusivity of all types of patients. Digestive diseases develop from a multitude of factors. However, due to some of the negative symptoms associated with digestive diseases and disorders, many people tend to avoid treatment.

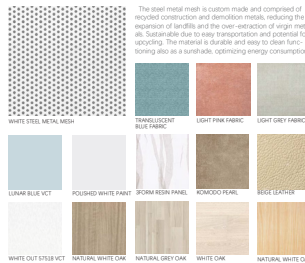
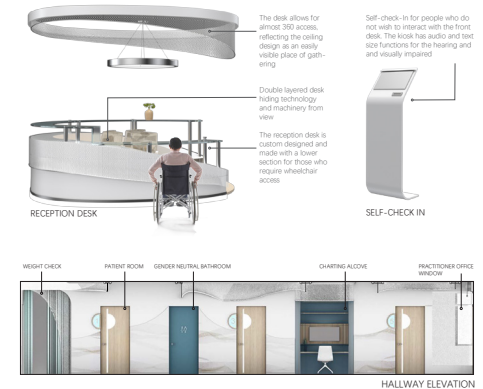
The concept of this project was developed to counter this and encourage treatment. The idea centers around osmosis. Osmosis is selected for its importance in acquiring nourishment in the digestive process but also for its other definition, the absorption, and assimilation of knowledge and ideas. The clinic hopes to establish a space to discuss and absorb new ideas through existing barriers, especially against the negative connotations in seeking treatment for digestive health.

The use of soft lines and curves throughout the plan construct spaces of gathering, creating an opportunity for enlightenment through community. The goal of the clinic is to build both mental and physical support for the patients. The clinic not only wishes to guide patients on a path to rehabilitation but emphasizes the importance of the relationship between physicians and patients, establishing the framework of osmosis through communication that fosters connectivity.

“What sets this submission apart is a clear formal language that finds its way into the organization of the space, the artful composition of its bounding edges, and the complementary integration of lighting, millwork, and furnishings.”
— Jury



RECEPTION + ACTIVE & SHORT TERM WAITING AREA



PATIENT ROOM

“This project demonstrates a cohesive design idea. The three-dimensional thinking expresses the emotion and feeling of the environment. You can see what it might feel like to be within this space.”
— Jury

“Lots of variety in the furnishings. Without a singular focus on healthcare pieces, it is holistic and well thought out.” — Jury



SCALE: 1/16" = 1'-0" FLOOR PLAN



INFUSION SUITE



INFUSION MODULE

INFUSION SECTION

SECOND PLACE

PROJECT

Curecology

STUDENTS

Erica Vallejo, Student IIDA
and Katherine White, Student IIDA

SCHOOL

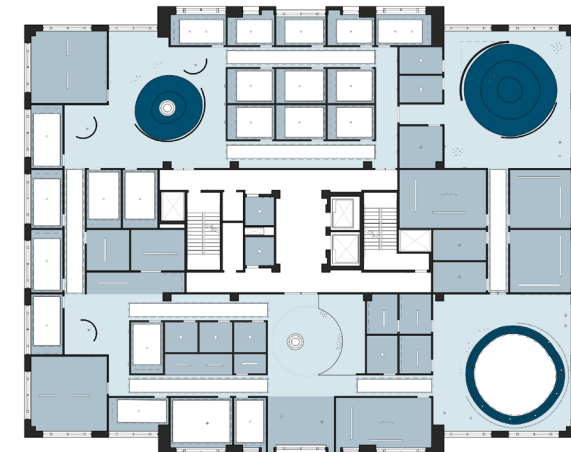
University of Texas Arlington
Arlington, Texas

PROJECT DESCRIPTION

Curecology represents the interaction between the earth's layers and its effects on humans. The healing ability of the earth's elements have long been used to provide both mental and physical support and lends Curecology an environment for wellness through the use of sustainable and local materials throughout the space, and a clean and light color palette.



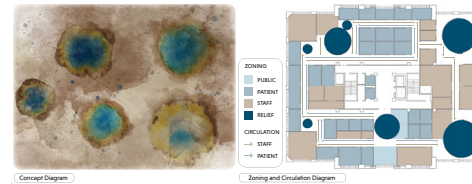
“The elemental simplicity of the organizational diagram of the plan lends conceptual coherence to the entire scheme. It provides a logical framework for the intuitive navigation and experiential clarity of its spatial environment.” — Jury



Height Key	
9'-0" - 9'-2"	
9'-0"	
8'-0"	
7'-0" - 9'-0"	

Symbols	Description
LED Recessed Downlight	
LED Track Mount	
LED Dual Directional Wall Sconce	
LED Ring Pendant	
LED Undercabinet Task Lighting	
LED Linear Recessed Bar Light	
LED Strip	
LED Cluster	
Decorative Pendant	

“The layout breaks out of a strictly linear feel and is a unique spin on the floorplate.” — Jury



“This project has a lot of viability and is very realistic. The inspirational images, floor plans, and overall design direction work cohesively together.” — Jury

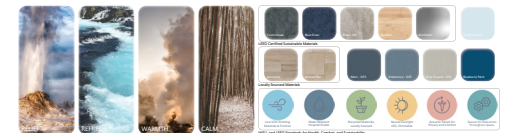


CURECOLOGY

Where Healing and Nature Meet

Curecology is a reflection of the earth's natural ecological healing process. Curecology is the hearth of the earth. It represents the interaction between earth's layers and its effects on humans, who have long had deep physical and emotional ties to nature. Throughout ancient history the earth's healing has been utilized to provide healing and wellness. Curecology provides an ideal environment for both mental and physical healing, by creating a sense of calm and relief.

The design showcases pockets of relief, comfort, and healing throughout the space. A clean and light palette is used to reflect nature and the refreshing atmosphere it provides. Warm lighting and natural materials are utilized to create a calm and healing atmosphere for the patient. Sustainable and local materials are used throughout the space. The ceiling enhances the pockets of warmth by creating layers of intimacy and closure for the patient. The space is zoned to provide efficiency for the staff and ease for the patient.



THIRD PLACE

PROJECT

Connect – Nature: Supportive
Design for Digestive Clinic

STUDENT

Krisnhoe Rinaldy

SCHOOL

Bandung Institute of Technology
Bandung, Indonesia

PROJECT DESCRIPTION

Connection with nature is the overall concept behind this project. The interior spaces are connected to nature through the usage of natural materials while providing ample views of the outdoors. The natural elements found throughout the space help support patients, families, and physicians while encouraging healing and lessening stress-related symptoms.



Connect → Nature

Supportive Design for Digestive Clinic

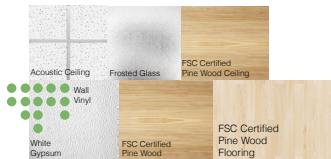
Connection with nature is one of the most important aspects of human life, numerous research shows that connection with nature affects greatly on human condition and wellbeing. The overall concept of the interior spaces is to connect humans to nature outside by strategic planning and inside by incorporating nature metaphors in the spaces to achieve the design that is not too stimulating, nor too plain.

The usage of certified light-coloured wood, white gypsum panels, and frosted glass materials give the impression the space is meditative also feeling spa-like hospitality, also supported by the connection to the view outside. Arizona is filled with many amazing landscapes that can be utilized as a meditative treatment by connecting the users inside of spaces to the outside. The cohesiveness of the spaces by incorporating natural metaphor inside and a natural view outside and also the support of family and physician can reduce digestive illness and stress-related symptoms.

Colors



Materials



“This is a successful project for its simplicity. There is a nice balance of wood and neutral palettes.”
— Jury



Waiting Room

“The well-edited effortlessness of this submission is its differentiating hallmark.” — Jury



Corridor



Reception



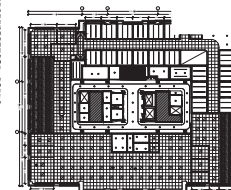
Infusion Suite



Nurse Station



Clinic Floor Plan
Scale 1/16" = 1'-0"



Reflected Ceiling Plan
Scale 1/32" = 1'-0"

Lighting Schedule	Ceiling Schedule
<ul style="list-style-type: none"> LED task lighting LED recessed Recessed lighting LED recessed LED recessed LED recessed LED recessed LED recessed LED recessed LED recessed 	<ul style="list-style-type: none"> Gypsum board drop ceiling Acoustic panel drop ceiling Acoustic panel drop ceiling Acoustic panel drop ceiling Acoustic panel drop ceiling Acoustic panel drop ceiling Acoustic panel drop ceiling Acoustic panel drop ceiling Acoustic panel drop ceiling Acoustic panel drop ceiling

“The public space provided the users options to create their own experience.”
— Jury



Caregiver Space

HONORABLE MENTION

PROJECT

"SHIFT" Digestive Health Clinic

STUDENTS

Cheulhee Hwang, Emilie Freeze,
Melissa Benggawan

SCHOOL

Iowa State University
Ames, Iowa

PROJECT DESCRIPTION

The concept behind the design of this digestive health clinic in Scottsdale, Arizona, is transition. Many patients visit a healthcare environment experiencing fear and anxiety. The space creates a healing and comfortable environment where every patient and visitor can transition their fears and anxiety into comfort. The two main techniques used throughout the space to create a calm and relaxing environment are positive distraction and biophilic design.

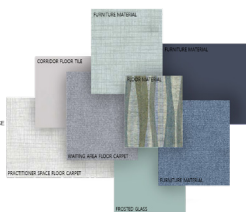


SHIFT | Digestive Health Clinic

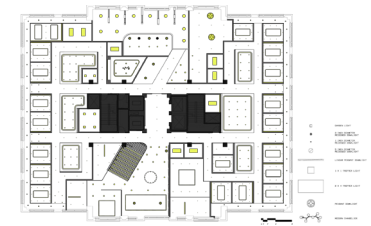
The digestive health clinic in Scottsdale, Arizona will create a HEALING and COMFORTABLE environment where every patient and visitor can switch their fears to comfort by introducing more of a personal or homey feeling in the waiting area and exam rooms. Providing DISTRACTIONS WITH MULTIPLE VISUAL EFFECTS will reduce patient anxiety and stress, and the overall space will be COLLABORATIVE HEALTHCARE with nurses' stations and physicians' offices to provide shared work areas and more opportunities for communication.



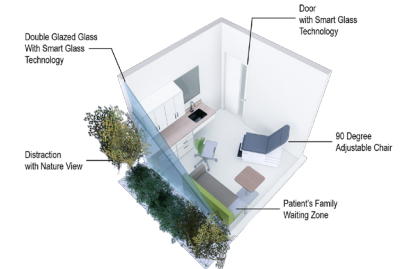
- 1. ACTIVE WAITING AREA
- 2. CHECK-IN
- 3. ADMINISTRATIVE WORK AREA
- 4. MANAGER'S OFFICE
- 5. PRACTITIONER'S OFFICE
- 6. CLINICAL WORK AREA
- 7. EXAM ROOM
- 8. LARGE EXAM ROOM
- 9. INFUSION SUITE
- 10. CONSULTANT ROOM
- 11. CHECK-OUT
- 12. STAFF LOUNGE
- 13. IT CLOSET
- 14. INSTRUMENT STERILIZATION
- 15. CHANGING LOCKERS
- 16. WEIGHT CHECK
- 17. STORAGE



"The space planning creates a nice flow. Good use of biophilia and wood tones to generate a sense of warmth and distraction."
— Jury



"The spatial resolution of the spaces in this proposal has appealing design attributes."
— Jury



HONORABLE MENTION

PROJECT

DHC | Digestive Health Clinic

STUDENT

Sean Guirey, Student IIDA

SCHOOL

Kendall College of Art and Design
of Ferris State University
Grand Rapids, Michigan

PROJECT DESCRIPTION

The Digestive Health Center of Scottsdale, Arizona, aims to create a rejuvenating healthcare experience inspired by the dynamic and restorative properties of the surrounding natural landscapes. The space is designed to foster the healing process, both physically and mentally, through the study and implementation of WELL Building Standards, healthcare science, and neuro-architectural elements. The design will focus on providing both patients and staff with the necessary spaces and tools to assist in the recovery process, as well as integrating architectural features that aid in alleviating stress along the way. Throughout the space, design elements including balanced lighting, natural connections, proxemic adjacencies, and curved/softened edges are implemented to ease the patient's sensory perceptions and overall experience within the space.



DHC | Digestive Health Center

A physician's group that specializes in gastroenterology will be constructing a 12,540-square-foot digestive health clinic within a new medical office building (MOB) in Scottsdale, Arizona. This clinic will specialize in preventing, diagnosing, and treating digestive and liver disorders such as celiac disease, Crohn's disease, acid reflux, irritable bowel syndrome, hepatitis, and cirrhosis. The clinic goal is to advance the delivery of care for patients suffering from all digestive health conditions.

The Digestive Health Center of Scottsdale, Arizona aims to create a *rejuvenating* healthcare experience, inspired by the dynamic and restorative properties of the surrounding natural landscapes. The space will be designed to foster the healing process, both *physically* and *mentally*, through the study and implementation of WELL Building Standards, healthcare science, and neuroarchitectural elements.

THE WELL BUILDING STANDARD™

SEVEN CONCEPTS FOR HEALTHIER BUILDINGS



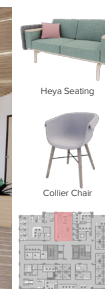
CHECK-IN ENCLAVES



CHARTING ALCOVE



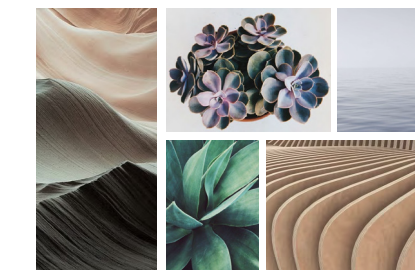
ACTIVE WAITING AREA



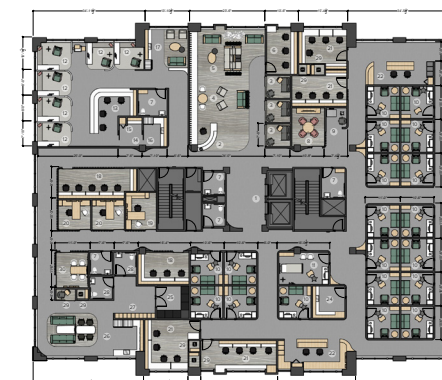
“Love the incorporation of WELL and the inspiration images. The curves and materials create a sense of “homefulness” and the floor plan is functional and practical.” — Jury



INFUSION SUITE



INSPIRATION



FLOOR PLAN

“This submission demonstrates a high level of discipline. The spaces are cohesive and well thought out.” — Jury

HONORABLE MENTION

PROJECT

Mountains and Water

STUDENTS

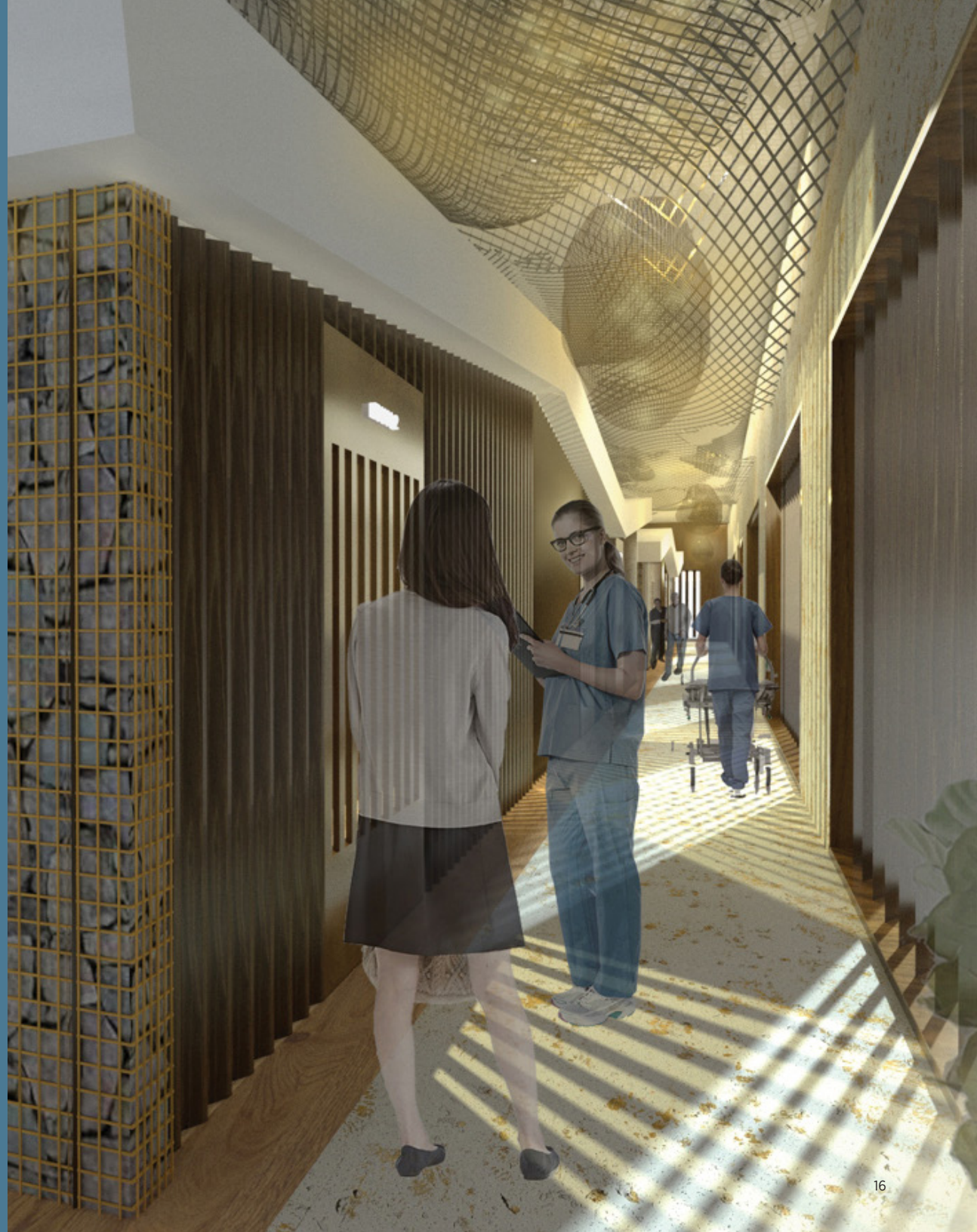
He Han, Student IIDA

SCHOOL

The Savannah College of Art and Design
Savannah, Georgia

PROJECT DESCRIPTION

Mountains and water play prominent roles in Eastern art. Painting scrolls feature towering mountain peaks and torrential waterfalls, slopes receding far into the distance, and gently rolling streams. This philosophy is applied to the design, creating a mountain and water view within the space. Interior materials like sustainable wooden panels, a metal mesh ceiling, and color concrete flooring create a harmonious natural landscape. The design is efficient, flexible, and well-equipped for all parties.



"This proposal showcases a refreshing and daring attempt at creating an immersive healthcare experience that emphasizes wellness and healing through the implementation of influences from Eastern art and landscapes." — Jury

MOUNTAINS AND WATER play prominent roles in Eastern art. Painting scrolls feature towering mountain peaks and torrential waterfalls, slopes receding far into the distance and gently rolling streams. No classical eastern traditional garden would be complete without mountains and water. Applying this philosophy into healthcare design, creating a mountain view within the spaces. Interior materials like sustainable wooden panels, metal mesh ceiling and color concrete flooring make the point of harmonious natural landscape. Design for efficient, flexible, and well equipped for all parties. During the examinations and consultations, virtual technology will often be used to support these discussions and decisions.



A: EXAM AREA
B: CHECK-IN
C: CONSULTANT ROOM
D: INFUSION SUITE
E: ADMINISTRATION
F: STAFF LOUNGE



PUBLIC SPACES
1. Active Waiting Area
2. Check In
3. Check Out
4. Patient Bathrooms
PATIENT SPACES
5. Consultant Room
6. Exam Rooms

INFUSION SUITE
7. Clinical work area
8. Patient area
9. Bathroom
10. Clean supply room
11. Solid hold closet
12. Mix room
13. Nourishment area
14. Short Term Waiting Area
15. Weight Check

CAREGIVER SPACES
16. Administrative Work Areas
17. Charting Alcove
18. Clinical Director Private Office
19. Clinical Work Areas
20. Instrument Sterilization
21. IT Closet
22. Manager's Offices
23. Practitioner's Offices
24. Staff Bathrooms
25. Staff Lockers
26. Staff Lounge



EXAM ROOM FLOORPLAN



SECTION



FLOOR PLAN

RCP PLAN

"The introduction of biophilia is appreciated and the visuals are inviting." — Jury



EXAM ROOM



EXAM ROOM CORRIDOR



CHECK IN

IIDA

IIDA is the commercial interior design association with global reach. We support design professionals, industry affiliates, educators, students, firms, and their clients through our network of 15,000+ members across 58 countries. We advocate for advancements in education, design excellence, legislation, leadership, accreditation, and community outreach to increase the value and understanding of interior design as a profession that enhances business value and positively impacts the health and well-being of people's lives every day.

www.iida.org

 FACEBOOK /IIDAHQ

 TWITTER @IIDA_HQ

 INSTAGRAM /IIDA_HQ

 LINKEDIN /International Interior Design Association

Front cover pictured: (top) DHC | Digestive Health Clinic by Sean Guirey, Student IIDA,
(right) Curecology by Erica Vallejo, Student IIDA and Katherine White, Student IIDA

THANK YOU TO THE 2020 STUDENT
DESIGN COMPETITION SPONSOR



carolina
an OFS company

Pictured: Osmosis Digestive Health Clinic by Tak Ying Chan and Wanlu Liu

